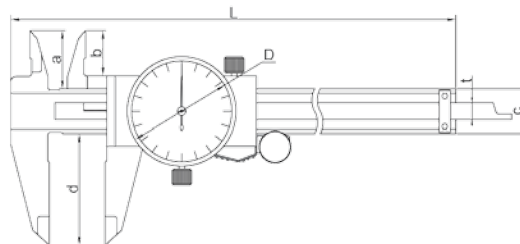
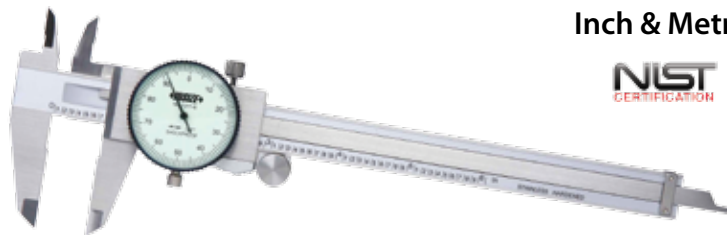


## Dial Calipers

Inch & Metric



- Graduations: Inch 0.001", Metric 0.01mm
- One revolution equals: Inch 0.1", Metric 1mm
- Shock proof dial indicator
- Supplied in fitted storage case

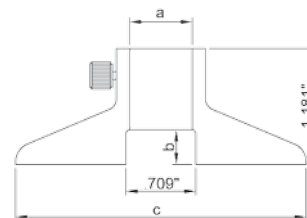
### Inch

| Range (Inch) | Accuracy (Inch) | L (Inch) | a (Inch) | b (Inch) | c (Inch) | d (Inch) | ØD (Inch) | t (Inch) | INSIZE No. | Code   |
|--------------|-----------------|----------|----------|----------|----------|----------|-----------|----------|------------|--------|
| 0-4          | ±0.0012         | 6.496    | 0.709    | 0.472    | 0.512    | 1.181    | 1.260     | 0.228    | 1311-4     | 280462 |
| 0-6          | ±0.0015         | 9.252    | 0.827    | 0.650    | 0.630    | 1.575    | 1.535     | 0.256    | 1311-6     | 816028 |
| 0-8          | ±0.0020         | 11.339   | 0.945    | 0.748    | 0.630    | 1.890    | 1.535     | 0.256    | 1311-8     | 816030 |
| 0-12         | ±0.0020         | 16.142   | 1.102    | 0.866    | 0.787    | 2.441    | 1.1.752   | 0.295    | 1311-12    | 816032 |

### Metric

| Range (mm) | Accuracy (mm) | L (mm) | a (mm) | b (mm) | c (mm) | d (mm) | ØD (mm) | t (mm) | INSIZE No. | Code   |
|------------|---------------|--------|--------|--------|--------|--------|---------|--------|------------|--------|
| 0-150      | ±0.03         | 235    | 21     | 16.5   | 16     | 40     | 39.0    | 6.5    | 1311-150A  | 816034 |
| 0-200      | ±0.03         | 288    | 24     | 19.0   | 16     | 48     | 39.0    | 6.5    | 1311-200A  | 816036 |
| 0-300      | ±0.03         | 410    | 28     | 22.0   | 20     | 62     | 44.5    | 7.5    | 1311-300A  | 816038 |

## Depth Base Attachment for Calipers



- Increases stability when measuring depths with a caliper
- Suitable for 0-6" and 0-8" Vernier calipers, electronic calipers and dial calipers with a beam width of (w) 0.63"
- Stainless steel

| a (Inch) | b (Inch) | c (Inch) | INSIZE No. | Code   |
|----------|----------|----------|------------|--------|
| 0.650    | 0.354    | 2.953    | 6140       | 816046 |

## Caliper Accessory Set



Caliper not included

- Set includes jaws, wrench and the following points: small cylindrical, large cylindrical, spherical, and pointed
- Components are hardened, ground and lapped
- Fits many brands
- For sizes 4", 6", and 8" calipers
- Used to measure slots, grooves, webs, shoulders, etc.

| Code   |
|--------|
| 805785 |