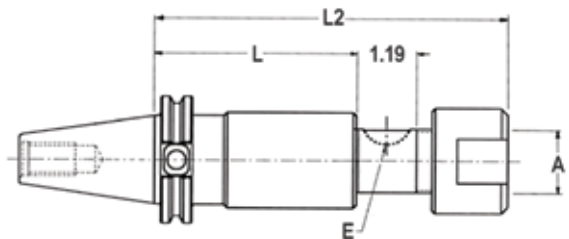


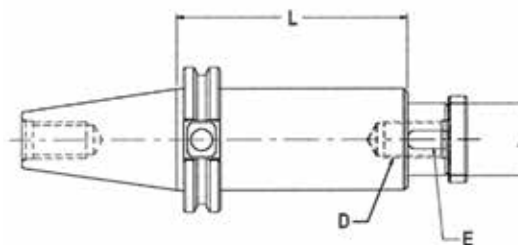
## Stub Arbor Adapters

For Side Milling Cutters

### Nut Type



### Screw Type



Taper	A Diameter (Inch)	L (Inch)	L2 (Inch)	E Key (Inch)	Code
CAT40	1.00	4.00	6.19	0.250	827685
CAT40	1.25	4.00	6.44	0.312	827686
CAT50	1.25	4.00	6.44	0.312	827688
CAT50	1.50	4.00	6.69	0.375	827689

Includes three spacers (1/8, 3/8, 3/4), key and nut.  
Additional spacers available.

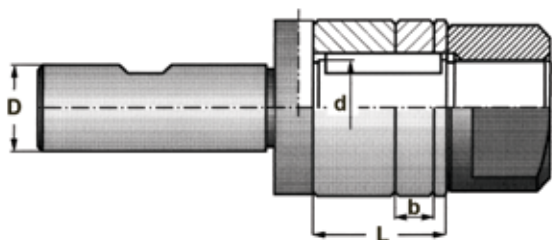
Taper	A Diameter (Inch)	L (Inch)	D Thread	E Key (Inch)	Code
CAT40	1.00	4.00	1/2-20	0.250	827690
CAT40	1.25	4.00	5/8-18	0.312	827691
CAT40	1.50	4.00	3/4-16	0.375	827692
CAT50	1.25	4.00	5/8-18	0.312	827693
CAT50	1.50	4.00	3/4-16	0.375	827694

Includes two spacers (1/4, 1/2), key and standard shell screw.

## Weldon Shank



- Made of alloy forged steel for long, durable service life
- Hardened to 56-60 HRC and ground to ensure maximum accuracy
- Face is held perpendicular to center line within 0.0004"
- Pilot diameter is sized for precision fit with cutter and is keyed for positive drive
- Heavy duty locking LH nut and three arbor spacers are included



D Shank Diameter (Inch)	d Arbor Diameter (Inch)	L (Inch)	Code
3/4	3/4	1	827192
3/4	7/8	1	827193
3/4	1	1	827194
3/4	1-1/4	1	827195