

## Tool Holder Bushings



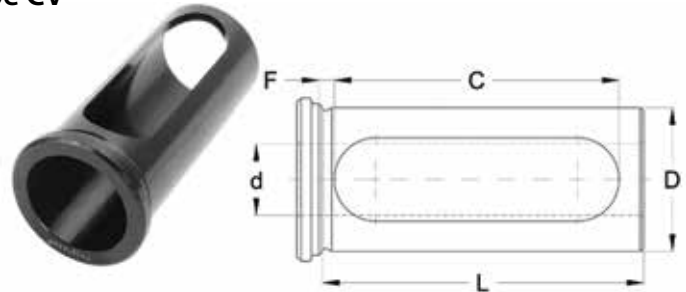
CNC Bushings – Black Oxide Finish – Types C, CV, B, DD, J & Z (continued)

### Type C (continued)

D Outside Diameter (Inch)	d Inside Diameter (Inch)	L Length Under Head (Inch)	C Slot Length (Inch)	F (Inch)	Code	D Outside Diameter (Inch)	d Inside Diameter (Inch)	L Length Under Head (Inch)	C Slot Length (Inch)	F (Inch)	Code
1-1/4	7/8	3-1/4	2-3/4	0.1496	310734	2	5/8	4	3-5/8	0.1319	310596
1-1/4	1	3-1/4	2-3/4	0.1496	310553	2	3/4	4	3-5/8	0.1319	310597
<b>6 Piece Set – 3/8" to 1"</b>					<b>300852</b>	2	7/8	4	3-5/8	0.1319	310738
1-1/2	3/8	3-3/8	3	0.1260	310735	2	1	4	3-5/8	0.1319	310599
1-1/2	1/2	3-3/8	3	0.1260	310559	2	1-1/4	4	3-5/8	0.1319	310601
1-1/2	5/8	3-3/8	3	0.1260	310561	2	1-1/2	4	3-5/8	0.1319	310603
1-1/2	3/4	3-3/8	3	0.1260	310563	2	1-3/4	4	3-5/8	0.1319	310605
1-1/2	7/8	3-3/8	3	0.1260	310736	<b>8 Piece Set – 1/2" to 1-3/4"</b>					<b>300855</b>
1-1/2	1	3-3/8	3	0.1260	310567	2-1/2	1/2	4-1/2	4-1/8	0.1457	310739
1-1/2	1-1/4	3-3/8	3	0.1260	310571	2-1/2	5/8	4-1/2	4-1/8	0.1457	310740
<b>7 Piece Set – 3/8" to 1-1/4"</b>					<b>300853</b>	2-1/2	3/4	4-1/2	4-1/8	0.1457	310741
1-3/4	1/2	3-1/2	3-1/8	0.1260	310575	2-1/2	7/8	4-1/2	4-1/8	0.1457	310742
1-3/4	5/8	3-1/2	3-1/8	0.1260	310577	2-1/2	1	4-1/2	4-1/8	0.1457	310743
1-3/4	3/4	3-1/2	3-1/8	0.1260	310579	2-1/2	1-1/4	4-1/2	4-1/8	0.1457	310744
1-3/4	7/8	3-1/2	3-1/8	0.1260	310737	2-1/2	1-1/2	4-1/2	4-1/8	0.1457	310745
1-3/4	1	3-1/2	3-1/8	0.1260	310583	2-1/2	1-3/4	4-1/2	4-1/8	0.1457	310746
1-3/4	1-1/4	3-1/2	3-1/8	0.1260	310587	2-1/2	2	4-1/2	4-1/8	0.1457	310747
1-3/4	1-1/2	3-1/2	3-1/8	0.1260	310591	2-1/2	2-1/4	4-1/2	4-1/8	0.1457	310748
<b>7 Piece Set – 1/2" to 1-1/2"</b>					<b>300854</b>	<b>10 Piece Set – 1/2" to 2-1/4"</b>					<b>300856</b>
2	1/2	4	3-5/8	0.1319	310595						

### Type CV

- CV bushings have long slots for clamping directly on the tool for positive alignment of the cutting edge of the tool



D Outside Diameter (Inch)	d Inside Diameter (Inch)	L Length Under Head Inch (mm)	C Slot Length Inch (mm)	F (Inch)	Code	D Outside Diameter (Inch)	d Inside Diameter (Inch)	L Length Under Head Inch (mm)	C Slot Length Inch (mm)	F (Inch)	Code	
1-1/4	1/4	2.36 (60)	1.97 (50)	0.1535	310749	1-1/2	1/4	2.76 (70)	2.36 (60)	0.1575	310756	
1-1/4	3/8	2.36 (60)	1.97 (50)	0.1535	310750	1-1/2	3/8	2.76 (70)	2.36 (60)	0.1575	310757	
1-1/4	1/2	2.36 (60)	1.97 (50)	0.1535	310751	1-1/2	1/2	2.76 (70)	2.36 (60)	0.1575	310758	
1-1/4	5/8	2.36 (60)	1.97 (50)	0.1535	310752	1-1/2	5/8	2.76 (70)	2.36 (60)	0.1575	310759	
1-1/4	3/4	2.36 (60)	1.97 (50)	0.1535	310753	1-1/2	3/4	2.76 (70)	2.36 (60)	0.1575	310760	
1-1/4	7/8	2.36 (60)	1.97 (50)	0.1535	310754	1-1/2	7/8	2.76 (70)	2.36 (60)	0.1575	310761	
1-1/4	1	2.36 (60)	1.97 (50)	0.1535	310755	1-1/2	1	2.76 (70)	2.36 (60)	0.1575	310762	
<b>7 Piece Set – 1/4" to 1"</b>					<b>300857</b>	1-1/2	1-1/4	70	60	0.1575	310763	
											<b>8 Piece Set – 1/4" to 1-1/4"</b>	<b>300858</b>