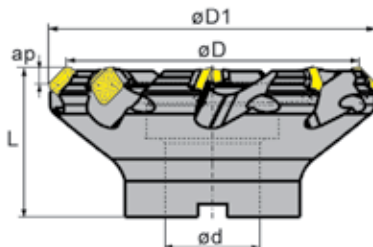
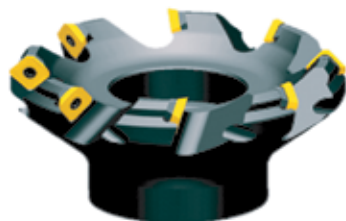


Face Mills



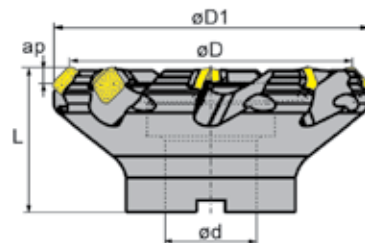
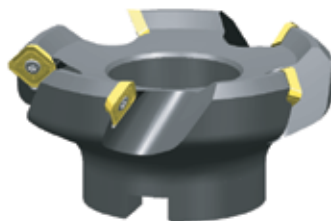
FMA01 Milling Cutters Lead Angle 45°



First choice for general purpose milling and mixed production

Type FMA01 Fine Pitch	ØD Inch (mm)	ØD1 Inch (mm)	Ød (Inch)	L (Inch)	ap Max. (Inch)	No. of Inserts	Insert Ref.	Code	Accessories			
									Shim Code	Shim Screw Code	Shim Key Code	Insert Screw Code
050-A0.75"-SE12-04	1.97 (50)	2.48 (63)	0.75	1.57	0.236	4	SEET12	574256	-	-	-	576304
063-A0.75"-SE12-05	2.48 (63)	2.99 (76)	0.75	1.57	0.236	5	SEET12	574258	-	-	-	576304
080-A1.00"-SE12-06	3.15 (80)	3.66 (93)	1.00	1.97	0.236	6	SEET12	574260	-	-	-	576304
100-B1.25"-SE12-07	3.94 (100)	4.45 (113)	1.25	1.97	0.236	7	SEET12	574262	-	-	-	576304
125-B1.50"-SE12-08	4.92 (125)	5.43 (138)	1.50	2.48	0.236	8	SEET12	574264	576300	576302	576310	576306
160-C2.00"-SE12-10	6.30 (160)	6.81 (173)	2.00	2.48	0.236	10	SEET12	574266	576300	576302	576310	576306
200-C2.50"-SE12-12	7.87 (200)	8.38 (213)	2.50	2.48	0.236	12	SEET12	574268	576300	576302	576310	576306

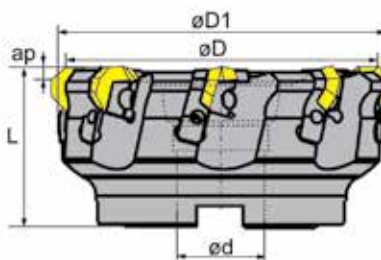
FMA02 Milling Cutters Lead Angle 45°



Reduced number of inserts with a differential pitch for best productivity when stability and power are limited (Long overhang/small machines)

Type FMA02 Differential Coarse Pitch	ØD Inch (mm)	ØD1 Inch (mm)	Ød (Inch)	L (Inch)	ap Max. (Inch)	No. of Inserts	Insert Reference	Code	Accessories
									Insert Screw Code
2.00"-A0.75"-SE12-04	2.00	2.51	0.75	1.50	0.236	4	SEET12	574270	576304
080-A1.00"-SE12-04	3.15 (80)	3.66 (93)	1.00	1.97	0.236	4	SEET12	574274	576304
100-B1.25"-SE12-05	3.94 (100)	4.45 (113)	1.25	1.97	0.236	5	SEET12	574276	576304

FMA04 Milling Cutters Lead Angle 45°



Type FMA04	ØD Inch (mm)	ØD1 Inch (mm)	Ød (Inch)	L (Inch)	ap Max. (Inch)	No. of Inserts	Insert Ref.	Code	Accessories					
									Locator Code	Locator Screw Code	Locator Key Code	Wedge Code	Wedge Screw Code	Wedge Key Code
125-B1.50"-OF07-08	4.92 (125)	5.34 (135.52)	1.50	2.48	0.200	8	OFMT07	574290	576324	576318	576316	576326	576322	576320
160-B2.00"-OF07-10	6.30 (160)	6.73 (171.11)	2.00	2.48	0.200	10	OFMT07	574292	576324	576318	576316	576326	576322	576320
200-C2.50"-OF07-12	7.87 (200)	8.31 (211.10)	2.50	2.48	0.200	12	OFMT07	574294	576324	576318	576316	576326	576322	576320