

Turning Inserts

For Machining Aluminum – Uncoated

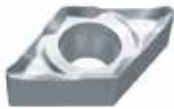


CCGX – Positive 80° Rhombic



ANSI	Uncoated Grade	Ø.I.C. (Inch)	Thickness (Inch)	Radius (Inch)	Code
CCGX2(1.5)0	YD101	0.250	0.094	0.008	573144
CCGX2(1.5)1	YD101	0.250	0.094	0.016	573146
CCGX2(1.5)2	YD101	0.250	0.094	0.031	573148
CCGX3(2.5)0	YD101	0.375	0.156	0.008	573150
CCGX3(2.5)1	YD101	0.375	0.156	0.016	573152
CCGX3(2.5)2	YD101	0.375	0.156	0.031	573154
CCGX432	YD101	0.500	0.187	0.031	573156

DCGX – Positive 55° Rhombic



ANSI	Uncoated Grade	Ø.I.C. (Inch)	Thickness (Inch)	Radius (Inch)	Code
DCGX2(1.5)0	YD101	0.250	0.094	0.008	573802
DCGX2(1.5)1	YD101	0.250	0.094	0.016	573804
DCGX3(2.5)0	YD101	0.375	0.156	0.008	573806
DCGX3(2.5)1	YD101	0.375	0.156	0.016	573808
DCGX3(2.5)2	YD101	0.375	0.156	0.031	573810

TCGX – Positive Triangular



ANSI	Uncoated Grade	Ø.I.C. (Inch)	Thickness (Inch)	Radius (Inch)	Code
TCGX2(1.5)1	YD101	0.250	0.094	0.016	575096
TCGX3(2.5)1	YD101	0.375	0.156	0.016	575098
TCGX3(2.5)2	YD101	0.375	0.156	0.031	575100

VCGX – Positive 35° Rhombic



ANSI	Uncoated Grade	Ø.I.C. (Inch)	Thickness (Inch)	Radius (Inch)	Code
VCGX2(1.5)1	YD101	0.250	0.094	0.016	575732
VCGX331	YD101	0.375	0.187	0.016	575734
VCGX332	YD101	0.375	0.187	0.031	575751
VCGX333	YD101	0.375	0.187	0.047	575753