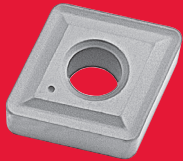
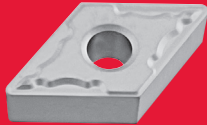


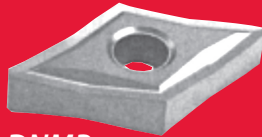
CARBIDE INDEXABLE INSERT BLOWOUT!!!



CNMG



DNMG



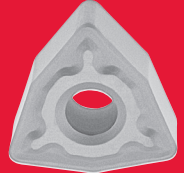
DNMP



VNMG



TNMG



WNMG

\$4.99
/each

PRICE AVAILABLE FOR ONLINE ORDERS ONLY

Insert	Grade	Radius	Code
CNMG 431	TK7 (93)	0.015"	5713001
CNMG 431	TK7 (95)	0.015"	5715001
CNMG 432	TK2 (93)	0.031"	5713006
CNMG 432	TK2 (97)	0.031"	SOLD OUT
CNMG 433	TK7 (95)	0.047"	5715008
CNMG 433	TK2 (95)	0.047"	5717008
CNMG 433	TK2 (95)	0.047"	5715009
CNMG 433	TK2 (97)	0.047"	210087
CNMG 542	TK7 (95)	0.031"	5715011
CNMG 542	TK2 (95)	0.031"	5715012
CNMG 643	TK7 (95)	0.047"	SOLD OUT
CNMG 643	TK2 (97)	0.047"	SOLD OUT
DNMG 431	TK2 (93)	0.015"	5713022

Insert	Grade	Radius	Code
DNMG 431	TK2 (95)	0.015"	5715022
DNMG 432	TK2 (93)	0.031"	5713026
DNMG 432	TK2 (95)	0.031"	5715026
DNMG 432	TK2 (97)	0.031"	5717026
DNMG 433	TK7 (95)	0.047"	5715028
DNMG 433	TK2 (97)	0.047"	210090
DNMP 431	TK7 (95)	0.015"	5715106
TNMG 332	TK2 (93)	0.031"	SOLD OUT
TNMG 431	TK2 (95)	0.015"	5715072
TNMG 432	TK7 (97)	0.031"	5717074
TNMG 432	TK2 (95)	0.031"	SOLD OUT
TNMG 432	TK2 (97)	0.031"	210092
TNMG 433	TK7 (95)	0.047"	5715077

Insert	Grade	Radius	Code
TNMG 433	TK7 (97)	0.047"	5717077
TNMG 433	TK2 (97)	0.047"	5717078
VNMG 331	TK2 (95)	0.015"	SOLD OUT
VNMG 332	TK2 (95)	0.031"	5715086
WNMG 431	TK2 (93)	0.015"	5713092
WNMG 431	TK2 (95)	0.015"	5715092
WNMG 432	TK7 (93)	0.031"	5713094
WNMG 432	TK2 (93)	0.031"	5713095
WNMG 432	TK2 (95)	0.031"	SOLD OUT
WNMG 433	TK7 (95)	0.047"	5715097
WNMG 433	TK7 (97)	0.047"	5717097
WNMG 433	TK2 (97)	0.047"	5717098

CHIPBREAKER: 93 = Finishing, 95 = Medium, 97 = Roughing

GRADE: TK7 = Black Aluminum Oxide - Steel/Stainless Steel, TK2= Gold - Stainless/High Temperature Alloys

FINAL SALE! WHILE QUANTITIES LAST!

