

Precision Milling Machine Vises



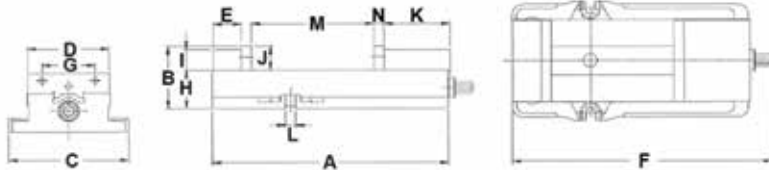
277064



277065



277066



Bed Height (from machine table)	Clamping Force (lbs)	Code
2.875" ±0.0005"	6,700	277064
2.875" ±0.0005"	7,900	277065
3.310" ±0.0005"	11,600	277066

A (Inch)	B (Inch)	C (Inch)	D (Inch)	E (Inch)	F (Inch)	G (Inch)	H (Inch)	I (Inch)	J (Inch)	K (Inch)	L (Inch)	M (Inch)	N (Inch)	Weight (lbs)	Code
17.01	4.63	9.25	6	2.05	18.74	3.87	2.87	1.50	1.75	4.84	0.69	7.5	0.71	79	277064
17.20	4.63	8.75	6	2.05	18.94	3.87	2.87	1.50	1.75	4.84	0.69	8.9	0.71	80	277065
21.85	5.51	11.61	8	2.28	23.03	4.72	3.31	1.97	2.20	6.18	0.81	10.4	0.95	150	277066

Toolmaker's Vises



321482 and 321483



321486

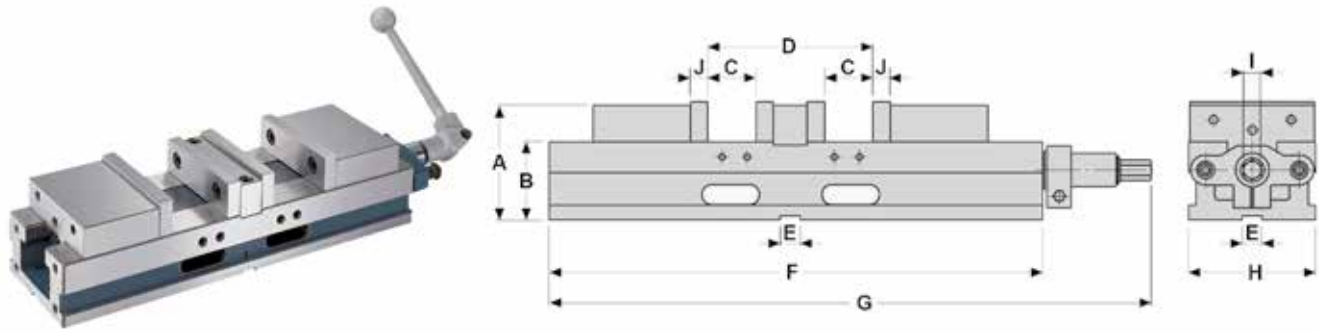
- Squareness and parallelism guaranteed within 0.0002" on sides and bottom
- Made of hardened steel and precision ground
- Horizontal and vertical v-grooves in movable jaw
- The "no rise" jaw construction exerts continual downward pressure on the jaw, preventing the jaw from rising which is a common problem on most vises

Jaw Width (Inch)	Jaw Opening (Inch)	Jaw Depth (Inch)	Overall Length (Inch)	Overall Height (Inch)	Code
2	3-1/8	1	5-1/2	2	321482
3	3-3/4	1-3/8	7	2-1/2	321483
3	4	1-3/8	7-1/4	2-1/2	321486



Jaw Width (Inch)	Jaw Opening (Inch)	Jaw Depth (Inch)	Vise Length (Inch)	Code
2	2-1/2	1	6	321488
2-1/2	3-1/2	1-1/4	7-1/2	321489
3	3-1/2	1-1/4	8-1/2	321490

Double CNC Precision Vises

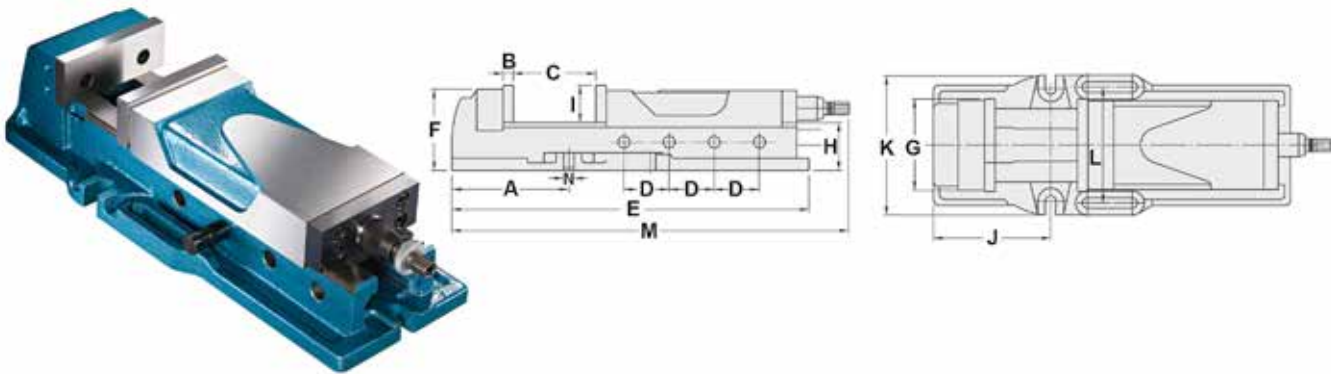


- Material: FCD 55 ductile iron; Hardness: 50 HRC
- Increases the workholding capacity of CNC machining centers by holding two pieces of different sizes (max. opening difference 70mm)
- Compact design allows several vises to be fitted to the machine table
- Center jaw may be removed to hold larger workpieces
- When center jaw is removed the vise is self-centering
- Special spring device allows an extra range of up to 5mm in workpiece size, enabling quick positioning and clamping

STANDARD ACCESSORIES: 2 alignment wedges, 4 clamps

Model	A (mm)	B (mm)	C (mm)	D (mm)	E (mm)	F (mm)	G (mm)	H (mm)	I (mm)	J (mm)	Weight (kg)	Code
HDL-4	92	63 ±0.01	74	200	18	395	480	104	14	14	20	277008
HDL-6	118	80 ±0.01	100	270	18	517	615	154	19	18	46	277010

Super Open Quick Action Vise



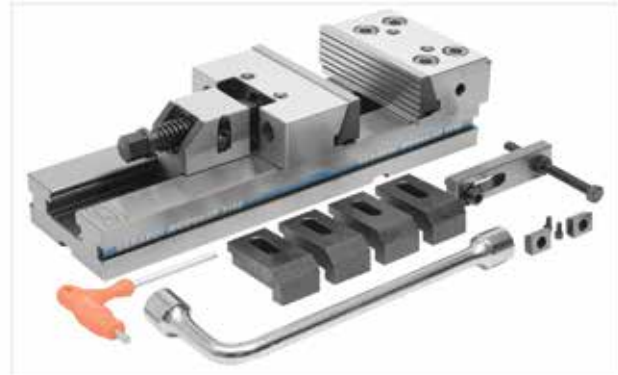
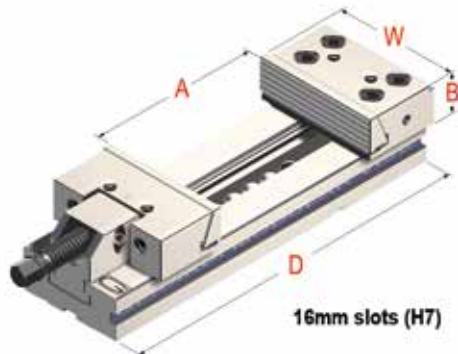
- Material: FCD 60 ductile iron; Hardness: 50 HRC
- Patented Multi-Power System provides extremely high clamping force of 0-4500 kg
- Consistent clamping pressure
- Eliminates all leakage and maintenance problems associated with hydraulic vises
- More compact than hydraulic vises
- Body has one-piece construction for high rigidity and precision
- Angle lock mechanism provides downward pressure on jaw to ensure parallel clamping force
- Both surfaces of slideways are heat treated for durability
- Large opening capacity up to 300mm

Model	A (mm)	B (mm)	C (mm)	D (mm)	E (mm)	F (mm)	G (mm)	H (mm)	I (mm)	J (mm)	K (mm)	L (mm)	M (mm)	N (mm)	Weight (kg)	Code
HSAC-160	200	15	300	77	610	139	158	82	63	200	240	190	915	18	58	277011

Modular System Vises



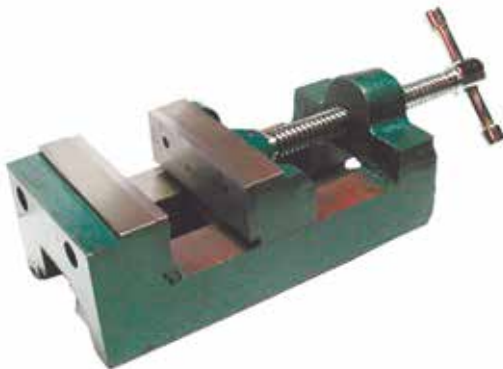
Standard Series



- Modular design for easy interchangeability
- Hardened and ground steel
- Manufactured under rigid quality control
- Fixed vise with guided movable jaw
- High alloyed quality resistance steel, case hardened (HRC 60 ±2)
- Unlimited clamping range
- Supplied with one workstop, one pair of positioning key nuts, two pair of clamps, one box wrench and one "T" wrench

Type	W Jaw Width (Inch)	A Jaw Opening (Inch)	B Jaw Height (Inch)	D Base Length (Inch)	Approximate Weight (kg/lbs)	Code
2	5	5.9	1.5	13.5	13/28	278002
3	6	7.8	1.9	16.5	26/56	278004
3	6	11.1	1.9	20.7	29/64	278006

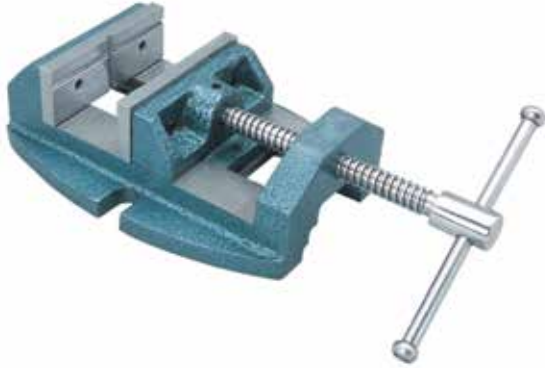
Drill Press Vises



Jaw Width (Inch)	Jaw Opening (Inch)	Jaw Depth (Inch)	Weight (lbs)	Code
2-1/2	2-1/4	1-1/4	12	302276
3-1/2	3	1-5/16	18	302277

Jaw Width (Inch)	Jaw Opening (Inch)	Jaw Depth (Inch)	Weight (kg/lbs)	Code
3-1/8	2-3/4	1-1/16	3/6.61	327490
4-1/8	3-3/4	1-3/16	4/8.82	327491
5	4-5/8	1-3/8	6/13.23	327492
6	5-5/8	1-3/8	8/17.64	327493

Precision Drill Press Vises



- Close grained cast iron construction
- Ground vise bed
- Hardened v-grooved tool steel jaws
- Knurled nut type grip makes it convenient to close and open the vise on the drill table

Jaw Width (Inch)	Jaw Opening (Inch)	Weight (lbs)	Code
3	3	6	416263
4	4	12	416264
5	5	23	416265



- Body made from special cast iron
- Hardened and ground jaws
- Hardness of jaws: 55 to 60 HRC
- Grooves in the jaws for holding round work pieces both horizontally and vertically

Jaw Width (Inch)	Jaw Opening (Inch)	Weight (lbs)	Code
4	4-5/16	17	416260

KR Precision Vise



- Stationary front jaw
- Back jaw moves along with the slide reducing the tendency of deflection and prevents the work piece from lifting
- Cast body, steel jaws
- Hardened throughout and ground on all sliding and contacting surfaces
- Ideal for CNC applications

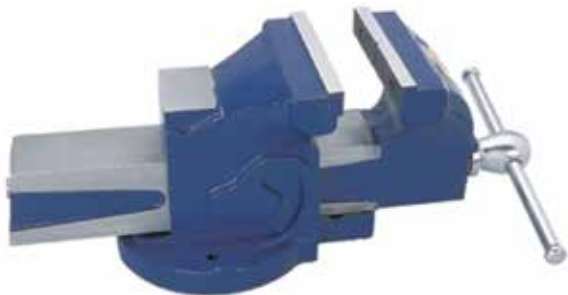
Vise

Jaw Width (Inch)	Jaw Opening (Inch)	Jaw Depth (Inch)	Code
6	8	1-7/8	301436

Base Only

Code
301437

Fixed Base Bench Vises



- Graded cast iron body
- Hardened and ground alloy steel jaws
- Perfectly aligned vise for smooth functioning

Jaw Width (Inch)	Jaw Opening (Inch)	Weight (lbs)	Code
3	3-3/8	11	416250
4	4	19	416251
5	5	28	416252
6	6	43	416253

Angle Vise



- Ideal for drilling, tapping or reaming applications
- 3 inch vise securely mounted on an angle base permitting quick 0-90° vertical angle adjustments
- Graduated settings for easy vertical angle readings
- Movable jaw plate is smooth, stationary jaw plate is grooved with a cross – patterned 90° V

Jaw Width (Inch)	Code
3	302275

U-Type Angle Vises



Jaw Width (Inch)	Code
3	318481
4	318482

Quick Action Vises



Jaw Width (Inch)	Jaw Opening (Inch)	Weight (lbs)	Code
3	2-3/4	10	312436
4	4-1/4	18	312437
6	6	29	312438
8	8	44	312439